

# Panorama Recycling Rules. Thanks for Recycling!

The Panorama recycling centers are managed by resident volunteers. We provide education, and also dumpster dive to pull unaccepted items from the bins. Please help us by following the rules below.

## Some Basics:

There are two main recycling centers. One is in the parking lot to the west of the auditorium. The 2<sup>nd</sup> is at the corner of Sleater Kinney and Chambers Lake Lane.

- **Note:** there is a difference between what is recyclable and what our recycling provider will accept. If it is not listed below, it is not accepted.
- **If in doubt, throw it in the trash.**
- If an item is smaller than your fist, put it in the trash. Small items cannot be sorted.
- **All bags must be emptied** – the machines cannot sort a bag full of mixed items.
- **NO plastic bags, sheet plastic, bubble wrap, or other plastic film.** They jam the sorting machines
- **Please do not leave items to share!!** Most of the time it is a volunteer who must dispose of these items.
- **NO** hazardous materials (like paint, chemicals, cleaning products, etc).
- For guidance on items not listed, see the Thurston County recycling page <https://www.co.thurston.wa.us/solidwaste/index.asp> and click on “Where do I Take My?”.
- Questions? Want to volunteer? – email [PanoramaRecycling@outlook.com](mailto:PanoramaRecycling@outlook.com).

## What goes in the Big Green Bin?

- **YES** Clean plastic bottles, jugs, jars. plastic dairy tubs & yogurt cups.
  - Remove and throw away all lids.
- **YES** Clean plastic buckets – remove handles.
- **YES** Cereal & food boxes that are unsoiled & uncoated.
- **YES** Cardboard – boxes must be flattened.
- **YES** Clean aluminum cans or tin(steel) cans, no other metals are accepted.
- **YES** Clean **uncoated sheet** paper, junk mail, paper bags, newspapers, magazines, paperback books.
- **YES** Moving boxes and packing paper (flatten all boxes).
- **NO** hazardous material containers like oil, gas, pesticides.
- **NO** plant pots.
- **NO** paper used to wrap food like fish or meat.
- **NO** Shredded paper.
- **NO** food containers (like takeout or milk and juice cartons) or paper plates, microwave trays.
- **NO** egg cartons of any kind. (food banks can use these).
- **NO** packaging made from compressed recycled paper.
- **NO** milk, juice, soup, etc. paper cartons.
- **NO** aluminum foil or cookware. **Uncoated** cookware can go to the metals collection site.
- **NO** paper reinforced with plastic or foil.
- **NO** clamshell containers.

### **What goes in the Glass Bins?**

- **Only** Glass, bottles, jars, etc. – must be clean.
- **NO** window glass, mirrors, glass cookware, Pyrex measuring cups, etc.
- **NO** Lids.

### **What goes in the Styrofoam Bin?**

- **Only** Styrofoam that breaks if you bend it.
- **NO** soft Styrofoam.
- **NO** packaging peanuts .

### **What goes in the Compost Bin?**

- **YES** Food scraps (fruits, vegetables, bread, pasta, pizza, rice, dairy, eggshells, meat and bones, seafood and shells, etc.).
- **YES** Coffee grounds, coffee filters & tea bags.
- **YES** Food soiled paper such as kitchen paper towels & napkins.
- **NO** compostable plastics or paper like bags, plates, forks & spoons, etc.
- **NO** Bags of any kind.
- **NO** Paper plates, microwave trays, take-out food containers.
- **NO** Paper towels used for cleaning with cleaning chemicals or bathroom waste paper.
- **NO** Newspaper
- **NO** Shredded paper
- **NO** Compostable k-cups.
- **NO** cardboard (like pizza boxes or other food containers).

### **What goes in the Batteries Bin?**

- **YES** All small batteries.
- **NO** large batteries like lead acid car or similar batteries.

### **What goes in the Electronics & Metal Bin? (in the dumpster room behind Chalet)**

- **YES** ELECTRONICS – TVs, computers, cell phones, printers, fax machines, ink cartridges, VCRs, DVD players, cameras, batteries, stereos. Note, check if the Barn will take if items are working.
- **YES** **Small** Appliances.
- **YES** METAL ITEMS -Uncoated cookware, metal wire. Other misc. metal items .
- **NO** Refrigerators
- **All items must fit in the cardboard bin.** For other items please contact the recycling team at [PanoramaRecycling@outlook.com](mailto:PanoramaRecycling@outlook.com).
- **Please do not leave large items blocking the doors.**
- **NO** Hazardous items or chemicals.

Only a limited number of items are accepted for recycling.

**This varies from community to community**

---

Why?

- Recycling is a business. It only works if costs can be kept low and if there is a market for the recyclables.
- The automated sorting machinery sorts by shape and color. Only specific items can be identified so anything else goes to landfill

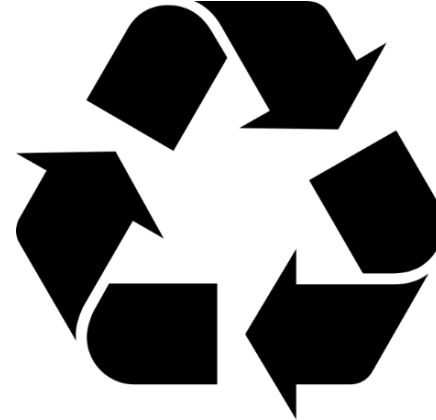


Recycle by Shape **NOT** by material type.  
Our recycling company only accepts plastic bottles and dairy tubs.

The material identification symbol on the left was created by the plastics industry. They made it look like the recycling symbol, but it does not indicate that the product is recyclable. It only tells you the base plastic resin type.



Material Identification Symbol  
Only tells you what the material is.  
**Does not indicate that the item is recyclable**



**Recycle Symbol**  
This shows that the item can be theoretically recycled but,  
**Only if accepted locally!**

## These Items are Not Accepted for Recycling

### Why?

- No takeout containers are accepted
- No mixed material types. Food containers have a plastic coating
- Machinery cannot sort these items



# These Items are Not Accepted for Recycling

## Why?

- Machinery cannot sort these items
- Plastic bags jam the machinery



## These Items are Not Accepted for Recycling

### Why?

- Compressed paper pulp packaging.
  - Made from end of life wood fibers that are too small for further use.
  - Paper can only be recycled a limited number of times.
- No egg cartons of any type accepted
- Machinery cannot sort these items



- Hard Styrofoam is recyclable

- Soft Styrofoam and peanuts are a different material, are not recyclable and not accepted



- Hard Styrofoam IS recyclable
- breaks when you bend it
- Rougher texture
- Small bits make a mess



Soft Styrofoam is NOT recyclable

- Does not break when you bend it
- Shinier smoother surface
- Compresses when you push
- This type includes peanuts



Don't combine  
items

Empty all  
bags!

The sorting machinery  
cannot sort bagged or  
combined items items.



- The plastic clam shell is not accepted for recycling.
- The cans are OK but would be thrown out with the plastic

This Item is  
Not Accepted  
for Recycling



- No plastic bags
- No shredded paper

Please do not  
leave items to  
share!

The volunteers  
must make time  
to dispose of  
them



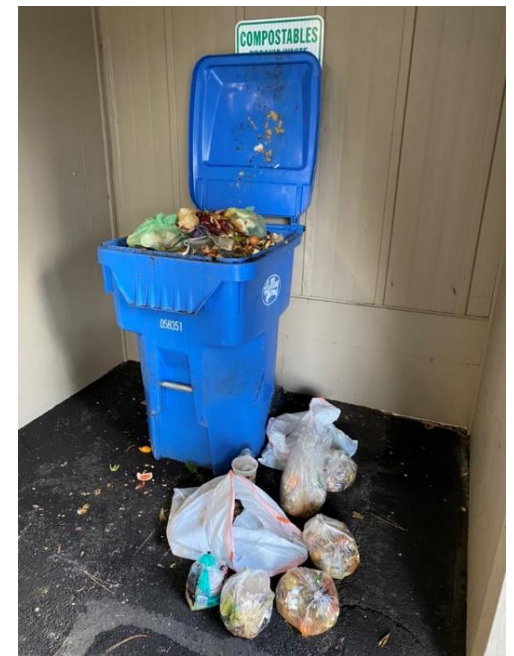
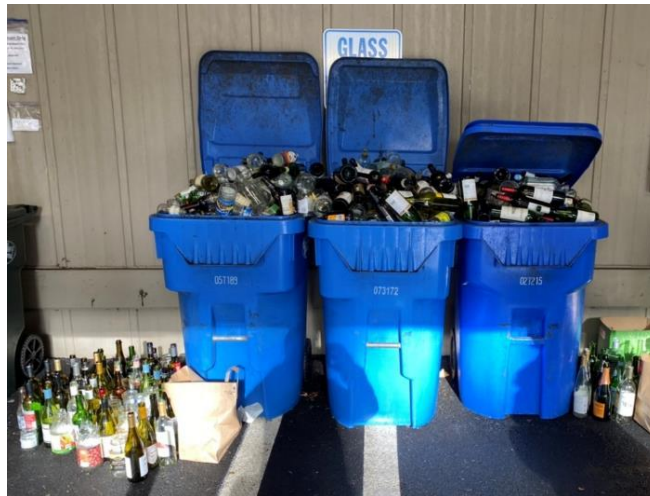
Ask if the Barn will take you items.

Check the Thurston County “Where can I take my?” web page for where to take you item.

<https://www.co.thurston.wa.us/solidwaste/database/index.asp>

Please don't overfill bins!!  
- It can be dangerous  
- It may attract wild creatures or pets

Please – Take your items home and come back another day



# This Item is Not Accepted for Recycling

## Why?

- Mixed material, paper has a coating, tab pages are plastic
- Remove the hard covers to recycle books with plain paper pages
- Paperbacks are fine to recycle



Sadly, this beautiful book is trash

## Electronics and metal recycling.

- All items must fit in the bin
- Don't leave large items without asking first
- Don't block access to the bin or block doors
- No hazardous materials like propane or other gas tanks, paint cans, or refrigerators.



Located in the dumpster room behind the Chalet apartment building